

March STEAM Challenge:

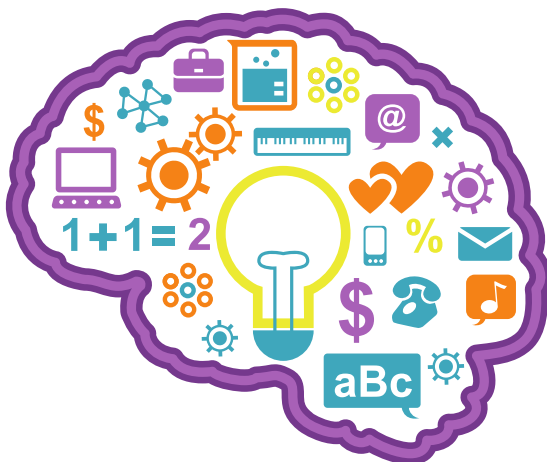
CRITICAL THINKING WITH PUZZLES

Step 1: Think

Solving puzzles exercises your mind by encouraging you to use logic and creativity. This type of thinking is called critical thinking, and it is used to solve the world's most difficult problems. Critical thinking is important in every career, especially STEM careers.

Here are some things to think about when solving puzzles:

- What information do I have?
- What information is missing?
- How can I look at the problem differently?
- Am I making any assumptions?



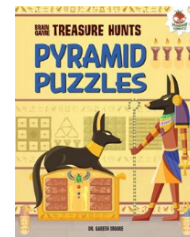
Step 2: Find

Explore the resources below and other resources you can find on the topic.

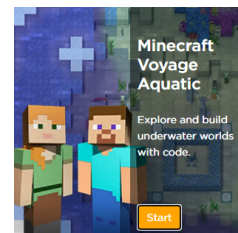
Video: Watch this month's STEAM Challenge video on YouTube.



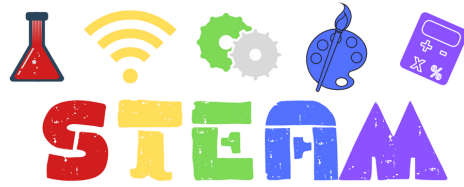
Book: Check out the Brain Game: Treasure Hunts series on Hoopla.



Game: Solve the coding puzzles on Minecraft: Voyage Aquatic at code.org.



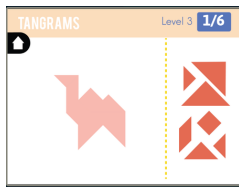
Contact your local LCPL branch for more resources.



Science Technology Engineering Art Math

March STEAM Challenge:

CRITICAL THINKING WITH PUZZLES



Game: Solve the tangram puzzles on abcya.com



Book: Test your critical thinking skills with these 'You Choose: Survival' Books on Hoopla

Step 3: Create & Explore

Make your own board game!

You can use the template on the next page or draw your own game. Use the questions below to help you get started.

- What kind of game will you make?
- How does a player win the game?
- Will you make props for your game? (Play money, trivia cards, spinner, dice)
- How many players can play the game together?
- What are some obstacles that players may face?
- Is my game fair to all players?
- How will my game look? Does it have a theme?

Once you build your game, test it out with friends. How did it go? Do you need to make any changes to the game? Was the game fair? Was it too long or too short? Was it too hard or too easy? Is there something you can change to make it better?

Contact your local LCPL branch for more resources.

